



Please find below a selection of our fast moving products, for full product list and further information please get in touch with us on +44 (0)1925 232662 or email us at mail@alliedexport.co.uk

CABLE TRAY SYSTEM FINISHES

(EXCLUDING RIS UNIKLIP SYSTEM)

Galvanised After: Products to this finish are manufactured from mild steel and galvanised after manufacture in accordance with BS EN 1461. These products achieve a thicker coating of zinc which enhances the products resistance to corrosion. Products to this finish are suitable for outdoor installations.



Stainless Steel: Used for products to be installed in the harshest of environments and in various process facilities. Unitrunk offers two grades of stainless steel material.

304: Used extensively throughout the industry. This is a tough, corrosion resistant austenitic grade of stainless steel which is popular in the food and pharmaceutical process industries. Unitrunk cable trunkings are as standard supplied in this grade of material.



316: Also referred to as Marine Grade. This austenitic grade of stainless steel through the addition of molybdenum is used mainly for installations which are exposed to high saline content environments such as offshore facilities and coastal environments. Our cable ladders, cable trays and support channels are supplied as standard in this grade of material. These two grades of stainless steel are to BS EN 10088-2:2005.



Powder Coated (Multicoloured): The painted finish is achieved by powder coating the base steel. This process is achieved by electrostatically charging the base material and then applying a free flowing, dry coloured powder to it. Heat is then applied to allow it to flow and form a "skin". The powder coated finish is very tough and durable providing relatively good corrosion protection. It can be applied to any type of steel finish, including post-galvanised.



Galvanised After Manufacture Corten A Steel: This material is used for products to be installed in environments where high levels of humidity and/or where corrosive substances are present. The high silicon content of Corten A substantially increases the zinc coating thickness which adheres to the surface of the steel thereby extending the life cycle of the installation. The typical zinc coating thickness achieved on 2.0mm mild steel, in accordance with BS EN 1461, is 55µ (microns) whereas 2.0mm Corten A steel can comfortably achieve a coating thickness of 140µ, more than doubling the time to first maintenance.



Pre-Galvanised 750 + 900: Mild steel material to BS EN 10346:2009, pre-coated at the steel manufacturers. Good resistance to rust in a dry, indoor environment. Not recommended for humid or outdoor installations.





SECTION 4

CABLE TRAY SYSTEMS

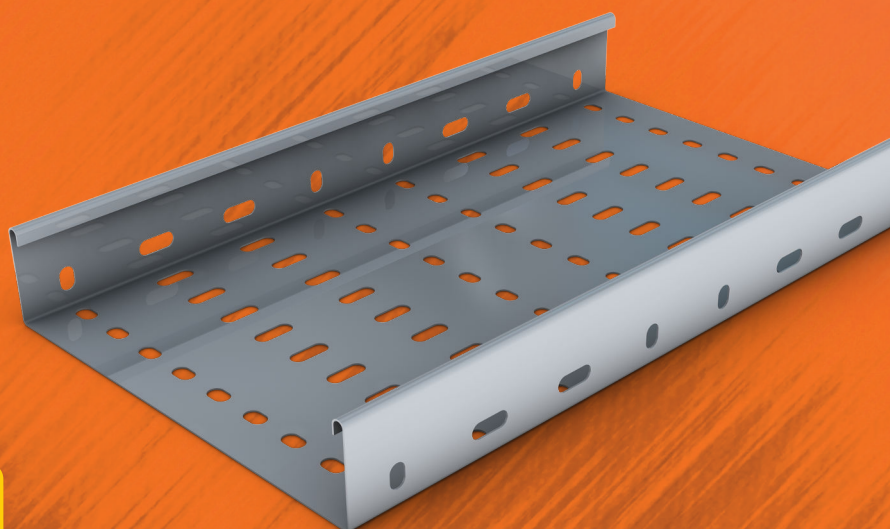
The Unitrunk range of Cable Tray Systems has been developed to suit the demands of an ever changing market. Considerable investment in state of the art computerised machinery has developed a production facility which is able to respond quickly to the demands of the market, making Unitrunk one of the most advanced companies in this field.

Customer satisfaction is of paramount importance to Unitrunk and great care is taken to ensure that the highest standards of manufacture are maintained. Unitrunk Cable Tray Systems consist of light, medium and heavy duty pattern with standard perforations. The requirements of a cable tray finish can vary, depending upon the situation, from being purely cosmetic to being capable of providing protection in the most corrosive environments. Unitrunk Cable Tray is produced in pre-galvanised mild steel to BS EN 10346:2009 or galvanized in accordance with BS EN ISO1461. All our trays conform to BS 61537:2007. A wide range of materials and finishes are also available on request.

ACCREDITED TO THE FOLLOWING STANDARDS



FM11705



LIGHT DUTY CABLE TRAY SYSTEMS

04

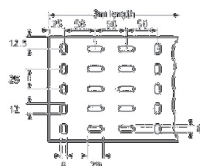
Light Duty Cable Tray (in accordance with BS 61537:2007)

All light duty tray lengths up to and including LD225T will be supplied with an inwards form on one end (to eliminate the need for couplers). LD300/T and above require the use of couplers. A range of gauges are available on request.

Ref.	Tray Width mm
LD50T	50
LD75T	75
LD100T	100
LD150T	150
LD225T	225
LD300T	300
LD450T	450
LD600T	600
LD750T	750
LD900T	900

Available across this size range

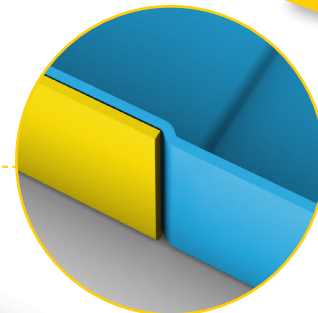
750 - 900 ONLY



Swaged joint

13.5mm on 50-225mm width

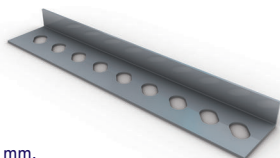
21.5mm on 300-900mm width



If you require 50 - 600 in **PG** please refer to the **UNIKLIP** Cable Tray section on page 53

Straight Coupler

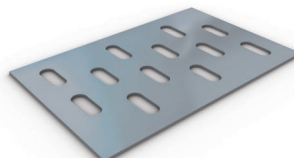
Ref.LD/SC



Length 161mm.
Sold in pairs.

Fish Plate

Ref.FP 225-900



Tray width less 58mm

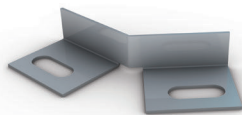
Earth Link

Ref.CES (Plain Copper)
Ref.TCES (Tinned Copper)
Ref.EBS100 (M6 Braid)



Cranked Coupler

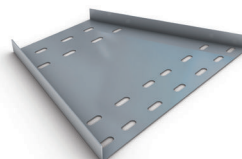
Ref.LD/CC



Sold in pairs.

Reducer

Ref.LD-SR



Total length 250mm.
Please state sizes required.

Bolts & Nuts

Ref.M6X12



Order separately.

Flat 90° Bend

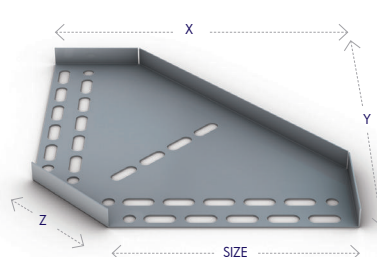
Ref.LD 50-900FB90

Size	50	75	100	150	225	300	450	600	750	900
X	126	151	175	225	375	450	600	750	900	1058
Y	166	191	215	265	415	490	640	790	940	1098
Z	107	107	107	107	211	211	211	211	211	211

Available across this size range



Available across this size range



If you require 50 - 600 in **PG** please refer to the **UNIKLIP** Cable Tray section on page 54

LIGHT DUTY CABLE TRAY SYSTEMS



Flat 45° Bend

Ref.LD 50-900FB45

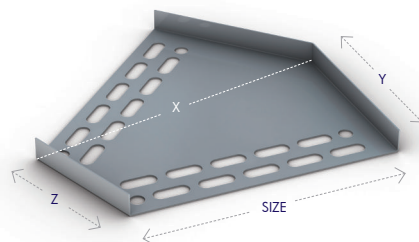
Size	50	75	100	150	225	300	450	600	750	900
X	66	93	120	174	268	344	510	673	835	998
Y	52	63	73	94	155	187	249	311	373	435
Z	58	58	58	58	115	115	115	115	115	115

Available across this size range

GA SS CP CX

Available across this size range

750 - 900 ONLY



If you require 50 - 600 in PG please refer to the UNIKLIP Cable Tray section on page 54

Flat 4 Way Equal Intersection

Ref.LD 50-900FW

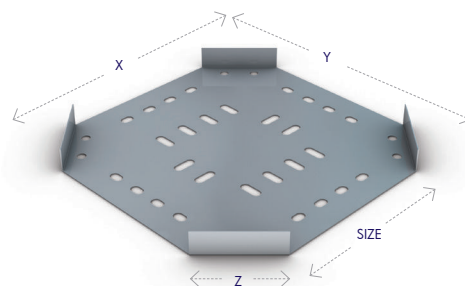
Size	50	75	100	150	225	300	450	600	750	900
X	177	213	249	320	532	637	850	1062	1274	1486
Y	177	213	249	320	532	637	850	1062	1274	1486
Z	107	107	107	107	211	211	211	211	211	211

Available across this size range

GA SS CP CX

Available across this size range

750 - 900 ONLY



If you require 50 - 600 in PG please refer to the UNIKLIP Cable Tray section on page 54

Flat Equal Tee

Ref.LD 50-900ET

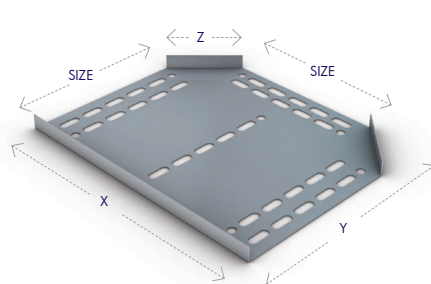
Size	50	75	100	150	225	300	450	600	750	900
X	204	229	254	304	530	605	755	906	1056	1206
Y	127	152	177	227	377	452	603	752	902	1053
Z	107	107	107	107	211	211	211	211	211	211

Available across this size range

GA SS CP CX

Available across this size range

750 - 900 ONLY



If you require 50 - 600 in PG please refer to the UNIKLIP Cable Tray section on page 54

Outside Riser

Ref.LD 50-450VR 600-900ER

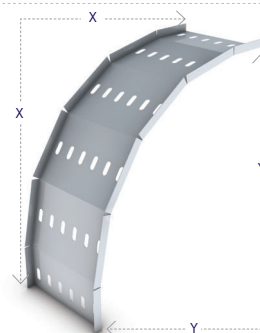
Size	50	75	100	150	225	300	450	600	750	900
X	297	297	297	297	297	297	297	297	297	297
Y	337	337	337	337	337	337	337	337	337	337

Available across this size range

GA SS CP CX

Available across this size range

750 - 900 ONLY



If you require 50 - 600 in PG please refer to the UNIKLIP Cable Tray section on page 55

Inside Riser

Ref.LD 50-450VR 600-900IR

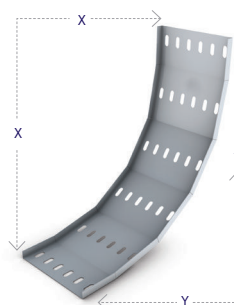
Size	50	75	100	150	225	300	450	600	750	900
X	297	297	297	297	297	297	297	297	297	297
Y	337	337	337	337	337	337	337	337	337	337

Available across this size range

GA SS CP CX

Available across this size range

750 - 900 ONLY



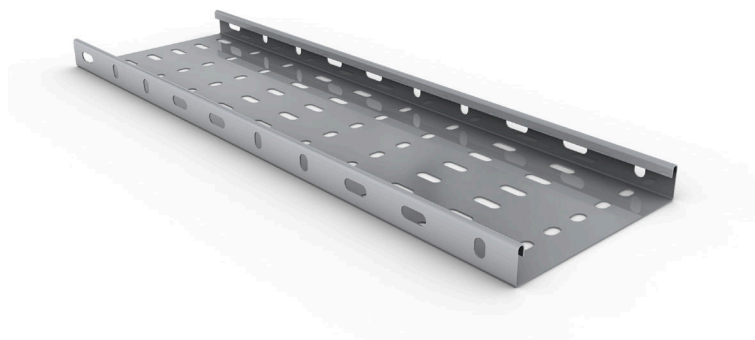
If you require 50 - 600 in PG please refer to the UNIKLIP Cable Tray section on page 55

Medium Duty Cable Tray (in accordance with BS 61537:2007)

Ref.	Tray Width mm
MR50T	50
MR75T	75
MR100T	100
MR150T	150
MR225T	225
MR300T	300
MR450T	450
MR600T	600
MR750T	750
MR900T	900

Available across this size range

750 - 900 ONLY

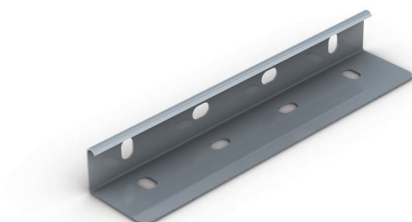


If you require 50 - 600 in  please refer to the **UNIKLIP** Cable Tray section on page 56

Straight Coupler

Ref.MR/SC

Length 225mm.
Sold in pairs.



Tray Divider

Ref.MR/DF

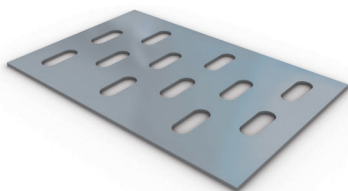
Length 3000mm.



Fish Plate

Ref.FP 100-900mm

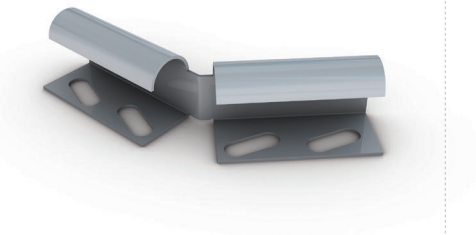
Tray width less 58mm



Cranked Coupler

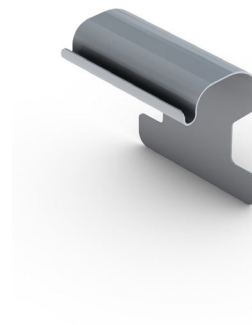
Ref.MR/CC

Sold in pairs.



Tray to Channel Klip

Ref. CHTR 25

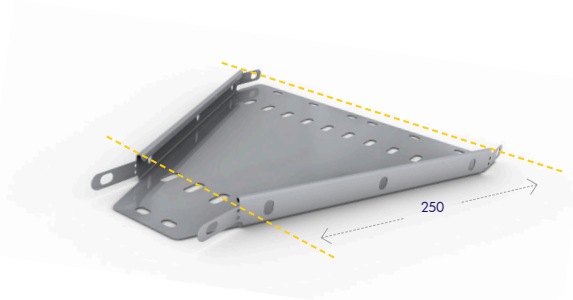


MEDIUM DUTY CABLE TRAY SYSTEMS

Reducer

Ref.MR-SR

Total length 250mm.
Please state sizes required.



Flat 90° Bend

Ref.MR 50-900FB90

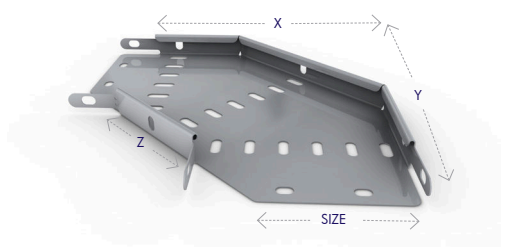
Size	50	75	100	150	225	300	450	600	750	900
X	126	151	175	225	375	450	600	750	900	1058
Y	166	191	215	265	415	490	640	790	940	1098
Z	107	107	107	107	211	211	211	211	211	211

Available across this size range

GA SS CP CX

Available across this size range

PG 750 - 900 ONLY



If you require 50 - 600 in PG please refer to the UNIKLIP Cable Tray section on page 57

Flat 45° Bend

Ref.MR 50-900FB45

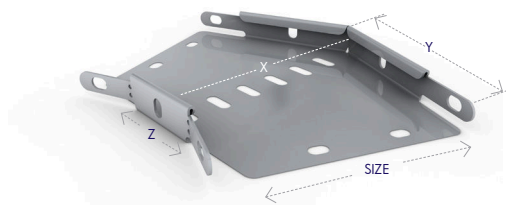
Size	50	75	100	150	225	300	450	600	750	900
X	66	93	120	174	268	344	510	673	835	998
Y	52	63	73	94	155	187	249	311	373	435
Z	58	58	58	58	115	115	115	115	115	115

Available across this size range

GA SS CP CX

Available across this size range

PG 750 - 900 ONLY



If you require 50 - 600 in PG please refer to the UNIKLIP Cable Tray section on page 57

Flat 4 Way Equal Intersection

Ref.MR 50-900FW

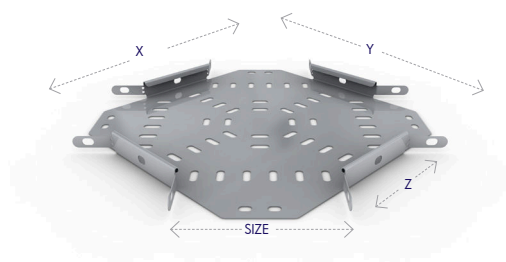
Size	50	75	100	150	225	300	450	600	750	900
X	177	213	249	320	532	637	850	1062	1274	1486
Y	177	213	249	320	532	637	850	1062	1274	1486
Z	107	107	107	107	211	211	211	211	211	211

Available across this size range

GA SS CP CX

Available across this size range

PG 750 - 900 ONLY



If you require 50 - 600 in PG please refer to the UNIKLIP Cable Tray section on page 57

Flat Equal Tee

Ref.MR 50-900ET

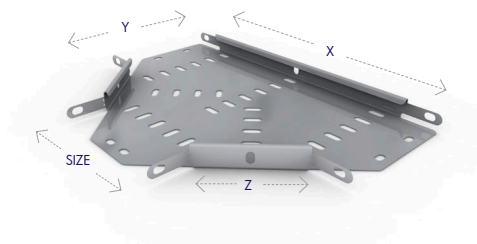
Size	50	75	100	150	225	300	450	600	750	900
X	204	229	254	304	530	605	755	906	1056	1206
Y	127	152	177	227	377	452	603	752	902	1053
Z	107	107	107	107	211	211	211	211	211	211

Available across this size range

GA SS CP CX

Available across this size range

PG 750 - 900 ONLY



MEDIUM DUTY CABLE TRAY SYSTEMS

04

Outside Riser

Ref.MR 50-450VR
Ref.MR 600-900ER

Size	50	75	100	150	225	300	450	600	750	900
X	297	297	297	297	297	297	297	297	297	297
Y	337	337	337	337	337	337	337	337	337	337

Available across this size range

GA SS CP GX

Available across this size range

PG 750 - 900 ONLY



If you require 50 - 600 in PG please refer to the **UNIKLIP** Cable Tray section on page 58

Inside Riser

Ref.MR 50-450VR
Ref.MR 600-900IR

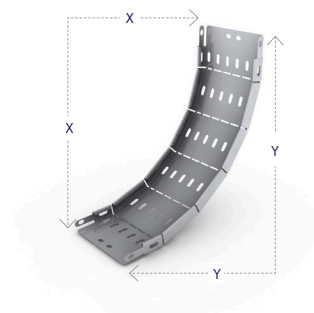
Size	50	75	100	150	225	300	450	600	750	900
X	297	297	297	297	297	297	297	297	297	297
Y	337	337	337	337	337	337	337	337	337	337

Available across this size range

GA SS CP GX

Available across this size range

PG 750 - 900 ONLY

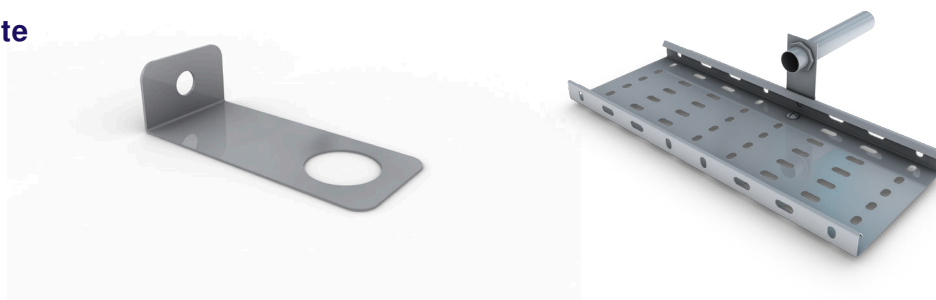


If you require 50 - 600 in PG please refer to the **UNIKLIP** Cable Tray section on page 58

Conduit Take-off Plate

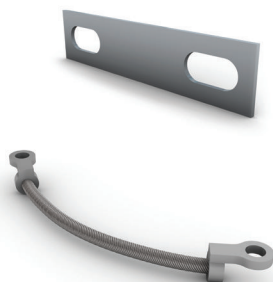
Ref.TRCB20
Ref.TRCB25

Suitable For Light/Medium/Heavy.



Earth Link

Ref.CES (Plain Copper)
Ref.TCES (Tinned Copper)
Ref.EBS100 (M6 Braid)



Bolts & Nuts

Ref.M6X12

Order separately.



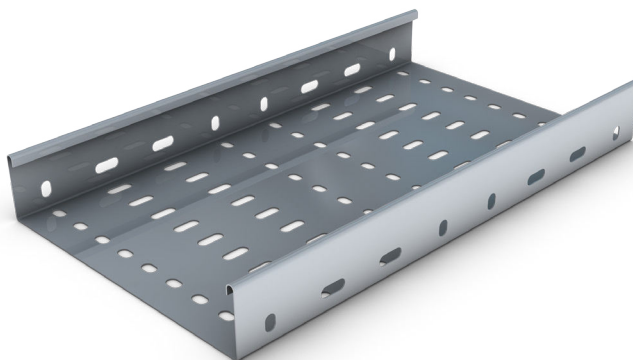
Heavy Duty Cable Tray

(in accordance with BS 61537:2007)

Ref.	Tray Width mm
HR50T	50
HR75T	75
HR100T	100
HR150T	150
HR225T	225
HR300T	300
HR450T	450
HR600T	600
HR750T	750
HR900T	900

Available across this size range

750 - 900 ONLY

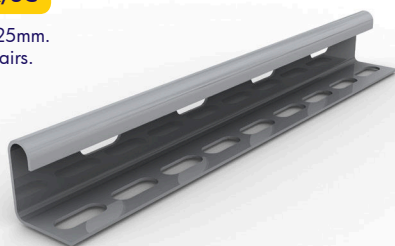


If you require 50 - 600 in  please refer to the **UNIKLIP** Cable Tray section on page 60

Straight Coupler

Ref.HR/SC

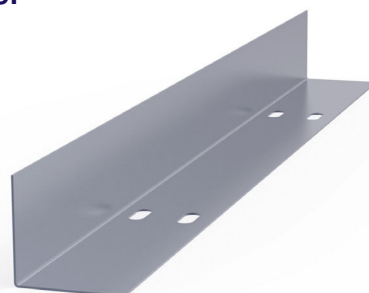
Length 225mm.
Sold in pairs.



Tray Divider

Ref.HR/DF

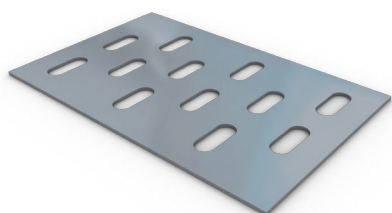
Length 3000mm.



Fish Plate

Ref.FP 100-900mm

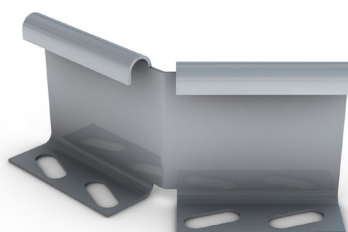
Tray width less 58mm.



Cranked Coupler

Ref.HR/CC

Sold in pairs.



Tray to Channel Klip

Ref. CHTR 50



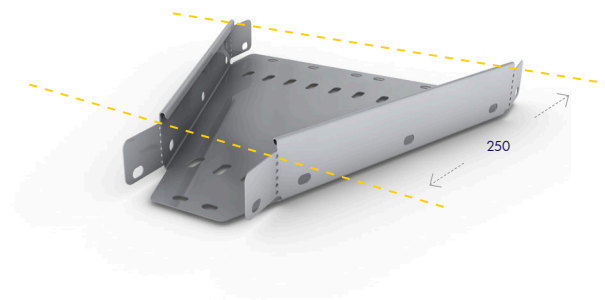
HEAVY DUTY CABLE TRAY SYSTEMS

04

Reducer

Ref.HR-SR

Total length 250mm.
Please state sizes required.

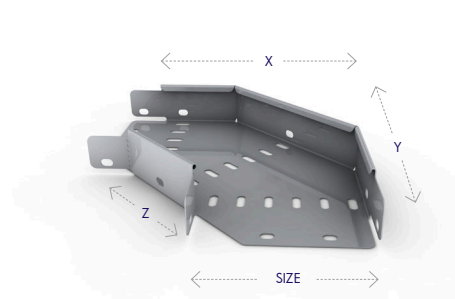


Flat 90° Bend

Ref.HR 50-900FB90

Size	50	75	100	150	225	300	450	600	750	900
X	126	151	175	225	375	450	600	750	900	1058
Y	166	191	215	265	415	490	640	790	940	1098
Z	107	107	107	107	211	211	211	211	211	211

Available across this size range Available across this size range



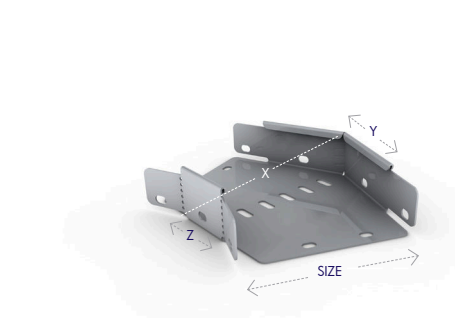
If you require 50 - 600 in please refer to the **UNIKLIP** Cable Tray section on page 61

Flat 45° Bend

Ref.HR 50-900FB45

Size	50	75	100	150	225	300	450	600	750	900
X	66	93	120	174	268	344	510	673	835	998
Y	52	63	73	94	155	187	249	311	373	435
Z	58	58	58	58	115	115	115	115	115	115

Available across this size range Available across this size range



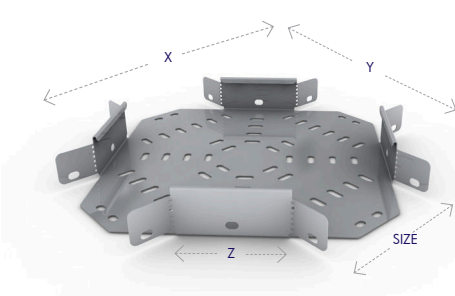
If you require 50 - 600 in please refer to the **UNIKLIP** Cable Tray section on page 61

Flat 4 Way Equal Intersection

Ref.HR 50-900FW

Size	50	75	100	150	225	300	450	600	750	900
X	177	213	249	320	532	637	850	1062	1274	1486
Y	177	213	249	320	532	637	850	1062	1274	1486
Z	107	107	107	107	211	211	211	211	211	211

Available across this size range Available across this size range



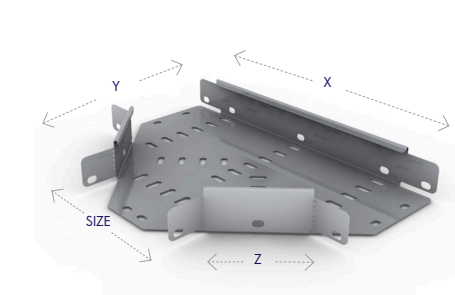
If you require 50 - 600 in please refer to the **UNIKLIP** Cable Tray section on page 61

Flat Equal Tee

Ref.HR 50-900ET

Size	50	75	100	150	225	300	450	600	750	900
X	204	229	254	304	530	605	755	906	1056	1206
Y	127	152	177	227	377	452	603	752	902	1053
Z	107	107	107	107	211	211	211	211	211	211

Available across this size range Available across this size range



If you require 50 - 600 in please refer to the **UNIKLIP** Cable Tray section on page 61

HEAVY DUTY CABLE TRAY SYSTEMS



Outside Riser

Ref.HR 50-450VR
Ref.HR 600-900ER

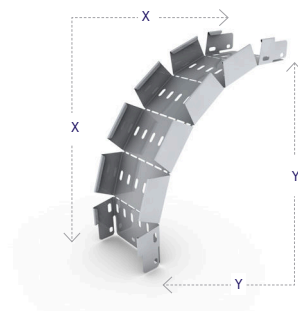
Size	50	75	100	150	225	300	450	600	750	900
X	297	297	297	297	297	297	297	297	297	297
Y	337	337	337	337	337	337	337	337	337	337

Available across this size range

PG 750 - 900 ONLY

Available across this size range

If you require 50 - 600 in PG please refer to the UNIKLIP Cable Tray section on page 62



Inside Riser

Ref.HR 50-450VR
Ref.HR 600-900IR

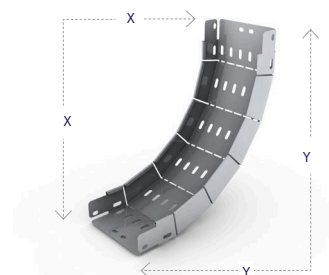
Size	50	75	100	150	225	300	450	600	750	900
X	297	297	297	297	297	297	297	297	297	297
Y	337	337	337	337	337	337	337	337	337	337

Available across this size range

PG 750 - 900 ONLY

Available across this size range

If you require 50 - 600 in PG please refer to the UNIKLIP Cable Tray section on page 62



**DON'T FORGET
THE NUTS &
BOLTS OF IT...**

**REMEMBER TO CHECK
SECTION 12
For all your Accessories
& Supports needs**

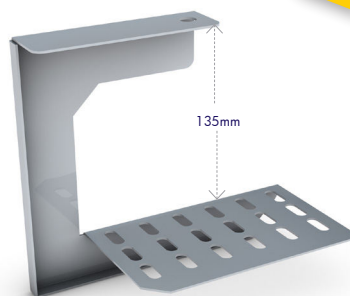
SEE PAGE 154



Tray Overhead Hangers

Ref.OH50-OH300

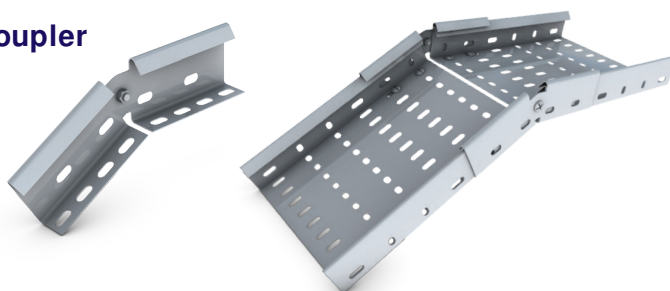
Suitable for Light/Medium/Heavy Duty Cable Tray.
50mm to 300mm Tray Width.



Vertical Adjustable Coupler

Ref.HR-VAC / MR-VAC

Sold in pairs to suit MR and HR Tray.



Stand-off Bracket

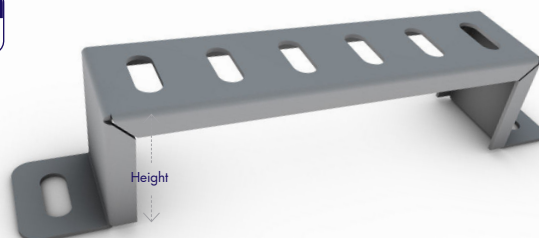
Ref. SOB50-SOB600

Size	50	75	100	150	225	300	450	600
Height	40	40	40	40	40	40	40	40

Order Information

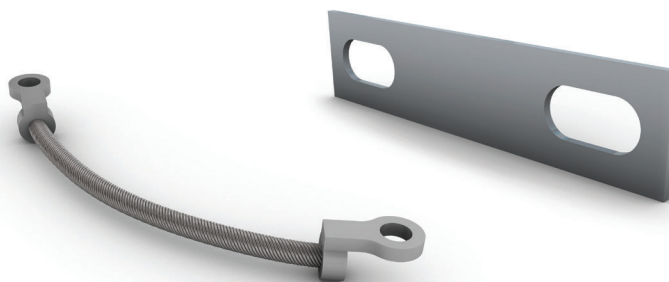
Stainless Steel 316 grade (prefix reference with SS).

Available finishes include: Pre-galvanised to BS EN 10346:2009 (standard references throughout brochure).
Post galvanised to BS EN ISO 1461:2009 (prefix reference with GA). Powder coated (prefix reference with CP).



Earth Link

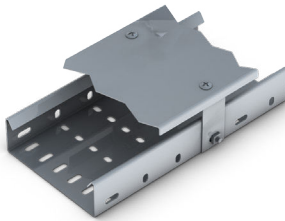
Ref.CES (Plain Copper)
Ref.TCES (Tinned Copper)
Ref.EBS100 (M6 Braid)



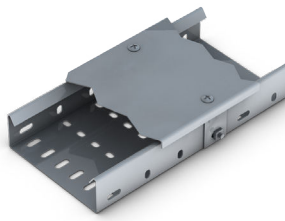
COVERS & BRACKETS

The Unitrunk cable tray range is complimented by an extensive range of covers. Covers are available to suit the Unitrunk medium duty and Unitrunk heavy duty cable tray systems. Covers are used with cable tray to provide mechanical and environmental protection for cables and other items installed on the cable tray. Covers can be installed as either closed (non-ventilated, close-fitting) or ventilated (plain raised cover) depending on the type of cover fixing kit supplied with each cover.

Covers for straight cable tray are available in non-standard gauges to suit particular site installation requirements, consult our Sales Team for details. Ventilated covers for Unitrunk medium duty return flange cable tray have a ventilation gap of 21mm. Ventilated covers for Unitrunk heavy duty return flange cable tray have a ventilation gap of 24mm.

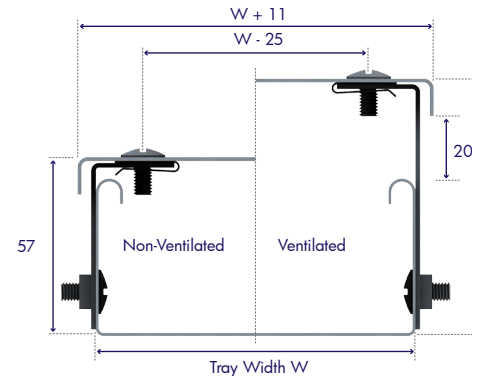


Straight Cable Tray
Ventilated (Raised) Cover

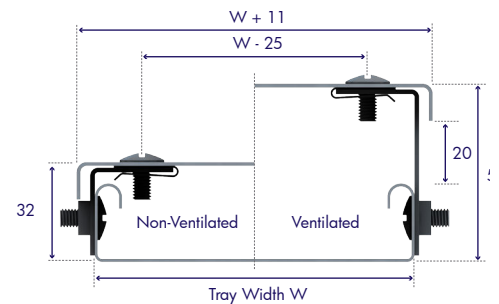


Straight Cable Tray Closed
(Non-Ventilated) Cover

Heavy Duty Cable Tray Covers



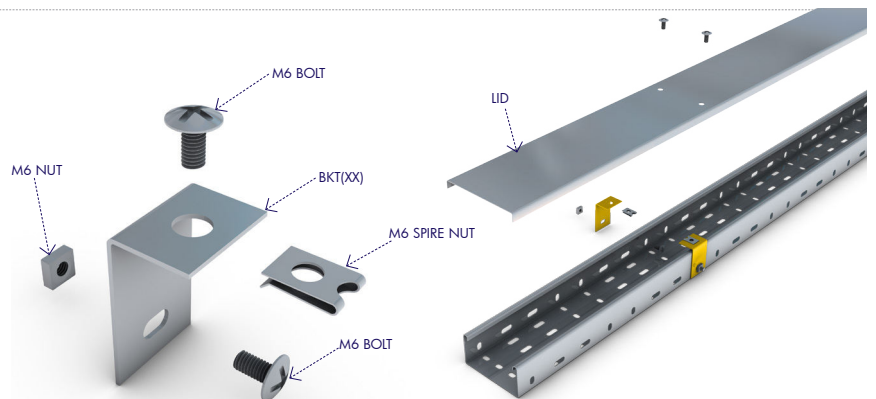
Medium Duty Cable Tray Covers



Cover Fixing Kits

Unitrunk cable tray covers are supplied complete kits with all necessary fixings. Each fixing kit comprises of a component lid, preformed mounting bracket, a corrosion resistant M6 spire nut, two M6 screws and one M6 nut.

The general method of assembly for the Unitrunk cable tray cover is as shown. This method is common to both medium and heavy duty cable trays and to cable tray fittings.



COVER KIT CODE GUIDE

STEP 1 : CHOOSE PRODUCT FINISH



PRE-GALVANISED *has no code prefix

STEP 2: VENTILATION

CODE	COVER TYPE
UC	Unventilated Cover
VC	Ventilated Cover

STEP 3: TRAY SIDE WALL

CODE	SIDEWALL HEIGHT
MR	Medium Duty
HR	Heavy Duty

STEP 4: TRAY WIDTH

CODE	TRAY WIDTH
50	50mm Wide
75	75mm Wide
100	100mm Wide
150	150mm Wide
225	225mm Wide
300	300mm Wide
450	450mm Wide
600	600mm Wide
750	750mm Wide
900	900mm Wide

STEP 5: PRODUCT TYPE

CODE	PRODUCT TYPE
T	Cable Tray
FB90	Flat Bend 90 Degrees
FB45	Flat Bend 45 Degrees
ET	Equal Tee
FW	Fourway Intersection
ER90	External Riser 90 Deg
IR90	Internal Riser 90 Deg
ER45	External Riser 45 Deg
IR45	Internal Riser 45 Deg

EXAMPLE ORDERING:

STAINLESS STEEL UNVENTILATED HEAVY DUTY 100MM WIDE EQUAL TEE = **SSUCHR100ET**

If you need specialist or bespoke products or you can't find the product specification you need, just call one of our regional offices or visit our website.

CABLE TRAY ACCESSORIES

04

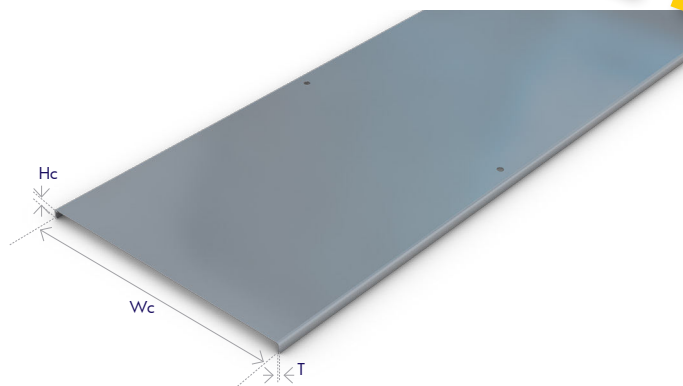
Straight Tray Covers

Unitrunk straight tray covers are 3m in length and are available in widths of 50mm to 900mm as standard. Covers are common for both closed and ventilated applications.

Straight Tray Covers - Dimensions & Weights

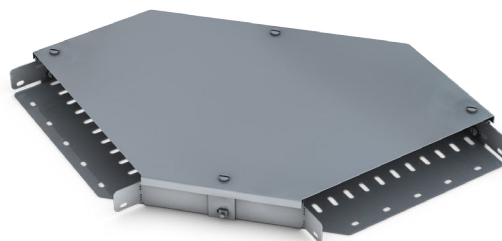
Ref.	Tray Width (mm)	Cover Width WC (mm)	Height HC (mm)	Weight (kg)
CR50T	50	61	11.9	2.59
CR75T	75	86	11.9	3.31
CR100T	100	111	11.9	3.99
CR150T	150	161	11.9	5.61
CR225T	225	236	11.9	7.92
CR300T	300	311	12.2	10.01
CR450T	450	461	12.5	18.19
CR600T	600	611	12.5	23.82
CR750T	750	761	12.5	29.63
CR900T	900	911	12.5	35.31

Weights shown are for standard stainless steel finish.



Cable Tray Fitting Covers

Unitrunk cable tray fitting covers are available in widths of 50mm to 900mm as standard. Covers are common for both closed and ventilated applications.



Cover Fixing Brackets

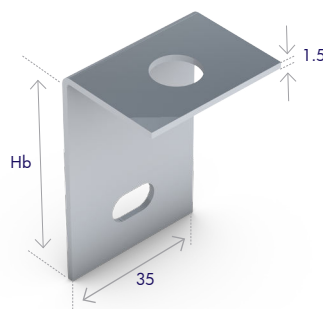
Covers for straight cable tray and cable tray fittings are supplied with the appropriate number of cover fixing kits as follows:

Cover Fixing Kit Requirements

Tray & Fitting Type	Width (mm)		
	50-150	225-450	600-900
Straight Tray	6	6	6
90° Flat Elbows	3	4	6
60° Flat Elbows	3	4	6
45° Flat Elbows	3	3	3
30° Flat Elbows	3	3	3
Inside Risers	4	4	4
Outside Risers	4	4	4
Equal Tees	3	4	5
Unequal Tees*	3	4	5
Equal Crosses	4	4	4
Reducers	4	4	4

*Based on largest branch size

Each cover fixing kit is supplied with the appropriate cover mounting bracket for either a non-ventilated cover or ventilated cover based on the part number ordered.
(For dimensions of the cover mounting brackets please refer to the relevant datasheet.)



Cover Fixing Brackets - Dimensions

Ref.	Cover Type	Bracket Height Hb mm
BKT28	Medium duty closed covers	28
BKT53	Medium duty ventilated covers	53
BKT53	Heavy duty closed covers	53
BKT78	Heavy duty ventilated covers	78