



Please find below a selection of our fast moving products, for full product list and further information please get in touch with us on +44 (0)1925 232662 or email us at [mail@alliedexport.co.uk](mailto:mail@alliedexport.co.uk)

## SECTION 6

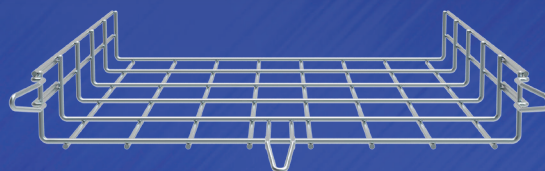
# Cable Basket Systems



A strong yet flexible solution is needed to meet the demands of the power, data and systems cabling being installed in modern buildings.

The patented EasyConnect Cable Basket system provides that solution. Adhering to the RIS (Rapid Installation Systems) philosophy, the integral coupler simply pushes together to form a secure joint, no additional couplers or special tools are required.

Manufactured to comply with BS EN 61537, EasyConnect meets all the load test and earth continuity requirements of the standard.



ALL SIDE OR BASE MOUNTED COUPLERS ARE INTEGRAL

EasyConnect has been short circuit tested and has achieved a fire rating of E90, providing further confidence in this quality solution.

### Modular Fabrication

The EasyConnect basket product is manufactured with an overall length of 3000mm. When two lengths are joined, the proximity of the joint means that the two lengths have a combined overall length of 6000mm. This makes it perfect for use in Modular (off-site) fabrication as this eliminates “basket creep” that would occur with other basket products. The basket can also be supplied cut to size (multiples of 100mm) to suit the specific demands of any project.

EasyConnect basket tray is patented and manufactured by Valdinox and distributed in the UK & Ireland exclusively through Unitrunk

ACCREDITED TO THE FOLLOWING STANDARDS



LUL ACCREDITATION ID:

**1820**



## EasyConnect Wire Basket\*

30mm side height



Stock length 3000mm.

\*Other lengths, dimensions and finishes are available on request, including Hot Dip Galvanised and Stainless Steel.

### Electro Zinc Plated

| Part Number  | Width<br>mm | Wire Ømm |      | Weight<br>kg/m | Cross Section<br>(mm <sup>2</sup> ) |
|--------------|-------------|----------|------|----------------|-------------------------------------|
|              |             | Length   | Beam |                |                                     |
| EC 30.060 EZ | 60          | 3.9      | 3.9  | 0.500          | 18.78                               |
| EC 30.100 EZ | 100         | 3.9      | 3.9  | 0.550          | 26.87                               |
| EC 30.150 EZ | 150         | 3.9      | 3.9  | 0.700          | 42.42                               |
| EC 30.200 EZ | 200         | 3.9      | 3.9  | 0.820          | 57.97                               |
| EC 30.300 EZ | 300         | 4.3      | 4.3  | 1.350          | 87.43                               |

## EasyConnect Wire Basket\*

100mm side height



Stock length 3000mm.

\*Other lengths, dimensions and finishes are available on request, including Hot Dip Galvanised and Stainless Steel.

### Electro Zinc Plated

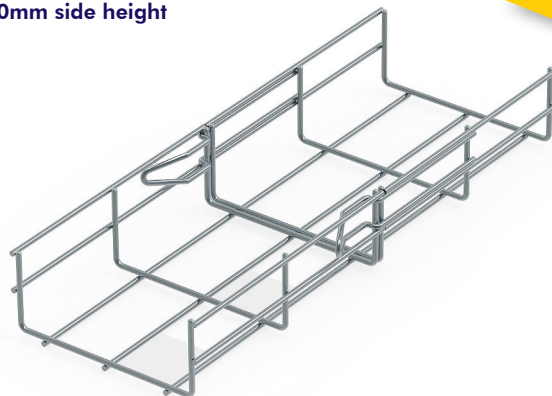
| Part Number   | Width<br>mm | Wire Ømm |      | Weight<br>kg/m | Cross Section<br>(mm <sup>2</sup> ) |
|---------------|-------------|----------|------|----------------|-------------------------------------|
|               |             | Length   | Beam |                |                                     |
| EC 100.150 EZ | 150         | 4.3      | 4.3  | 1.350          | 139.24                              |
| EC 100.200 EZ | 200         | 4.3      | 4.3  | 1.640          | 191.04                              |
| EC 100.300 EZ | 300         | 4.3      | 4.8  | 2.200          | 292.68                              |
| EC 100.400 EZ | 400         | 4.6      | 4.8  | 2.800          | 395.88                              |
| EC 100.500 EZ | 500         | 4.6      | 4.8  | 3.200          | 499.08                              |
| EC 100.600 EZ | 600         | 4.6      | 4.8  | 3.600          | 602.28                              |

### PLEASE NOTE:

EasyConnect is also available in a 155mm side wall on request.

## EasyConnect Wire Basket\*

60mm side height



Stock length 3000mm.

\*Other lengths and dimensions are available on request.

### Electro Zinc Plated

| Part Number  | Width<br>mm | Wire Ømm |      | Weight<br>kg/m | Cross Section<br>(mm <sup>2</sup> ) |
|--------------|-------------|----------|------|----------------|-------------------------------------|
|              |             | Length   | Beam |                |                                     |
| EC 60.060 EZ | 60          | 3.9      | 3.9  | 0.720          | 25.75                               |
| EC 60.100 EZ | 100         | 3.9      | 3.9  | 0.770          | 48.47                               |
| EC 60.150 EZ | 150         | 3.9      | 3.9  | 0.935          | 76.52                               |
| EC 60.200 EZ | 200         | 3.9      | 3.9  | 1.070          | 104.57                              |
| EC 60.300 EZ | 300         | 4.3      | 4.3  | 1.643          | 158.63                              |
| EC 60.400 EZ | 400         | 4.3      | 4.8  | 2.200          | 211.86                              |
| EC 60.450 EZ | 450         | 4.6      | 4.8  | 2.420          | 238.53                              |
| EC 60.500 EZ | 500         | 4.6      | 4.8  | 2.800          | 266.73                              |
| EC 60.600 EZ | 600         | 4.6      | 4.8  | 3.200          | 321.93                              |

### Hot Dip Galvanised\*

| Part Number   | Width<br>mm | Wire Ømm |      | Weight<br>kg/m | Cross Section<br>(mm <sup>2</sup> ) |
|---------------|-------------|----------|------|----------------|-------------------------------------|
|               |             | Length   | Beam |                |                                     |
| EC 60.060 HDG | 60          | 3.9      | 3.9  | 0.800          | 25.75                               |
| EC 60.100 HDG | 100         | 3.9      | 3.9  | 0.860          | 48.47                               |
| EC 60.150 HDG | 150         | 3.9      | 3.9  | 1.020          | 76.52                               |
| EC 60.200 HDG | 200         | 3.9      | 3.9  | 1.200          | 104.57                              |
| EC 60.300 HDG | 300         | 4.3      | 4.3  | 1.820          | 158.63                              |
| EC 60.400 HDG | 400         | 4.3      | 4.8  | 2.380          | 211.86                              |
| EC 60.450 HDG | 450         | 4.6      | 4.8  | 2.660          | 238.53                              |
| EC 60.500 HDG | 500         | 4.6      | 4.8  | 3.080          | 266.73                              |
| EC 60.600 HDG | 600         | 4.6      | 4.8  | 3.560          | 321.93                              |

### Stainless Steel\*

| Part Number  | Width<br>mm | Wire Ømm |      | Weight<br>kg/m | Cross Section<br>(mm <sup>2</sup> ) |
|--------------|-------------|----------|------|----------------|-------------------------------------|
|              |             | Length   | Beam |                |                                     |
| EC 60.060 IN | 60          | 4.0      | 4.0  | 0.740          | 25.50                               |
| EC 60.100 IN | 100         | 4.0      | 4.0  | 0.840          | 48.16                               |
| EC 60.150 IN | 150         | 4.0      | 4.0  | 0.970          | 76.16                               |
| EC 60.200 IN | 200         | 4.0      | 4.0  | 1.140          | 104.16                              |
| EC 60.300 IN | 300         | 4.4      | 4.4  | 1.740          | 158.13                              |
| EC 60.400 IN | 400         | 4.4      | 4.8  | 2.100          | 211.75                              |
| EC 60.450 IN | 450         | 4.4      | 4.8  | 2.300          | 238.46                              |
| EC 60.500 IN | 500         | 4.4      | 4.8  | 2.460          | 266.95                              |
| EC 60.600 IN | 600         | 4.4      | 4.8  | 2.830          | 322.15                              |

### PLEASE NOTE:

Stainless Steel basket available in 304 & 316 Grades.





# UNITRUNK

## CABLE BASKET SYSTEMS

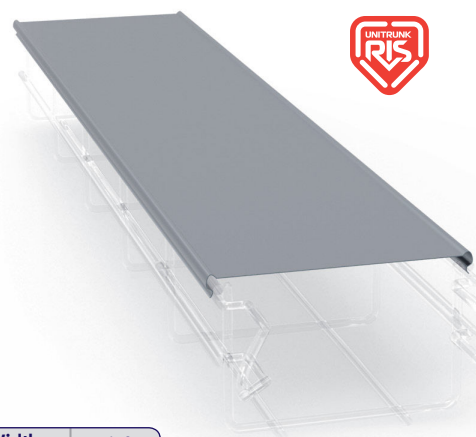
### Divider Strip

| Type     | Height mm | Weight kg/pc |
|----------|-----------|--------------|
| SEP30SZ  | 30        | 1.410        |
| SEP60SZ  | 60        | 1.752        |
| SEP100SZ | 100       | 2.505        |

### Divider Fast Fix Clip

| Type   | Pack Qty | Weight kg/pc |
|--------|----------|--------------|
| CSEPSZ | 50       | 0.012        |

### Basket Lid



### Divider Support

| Type    | Pack Qty | Weight kg/pc |
|---------|----------|--------------|
| SEP/DSC | 50       | 0.019        |



| Type   | Width mm (X) | Weight /unit |
|--------|--------------|--------------|
| T060SZ | 60           | 0.545        |
| T100SZ | 100          | 0.665        |
| T150SZ | 150          | 0.905        |
| T200SZ | 200          | 1.145        |
| T300SZ | 300          | 1.905        |
| T400SZ | 400          | 2.465        |
| T500SZ | 500          | 3.465        |
| T600SZ | 600          | 4.105        |

Click lid system is supplied in 2M length Finished in Pre Galv. Stainless Steel and Dip Galvanised are also available.

### Joint Connector



| Type | Pack Qty | Weight kg/pc |
|------|----------|--------------|
| UUEZ | 100      | 0.027        |

### Central Hanger - Threaded Rod Type



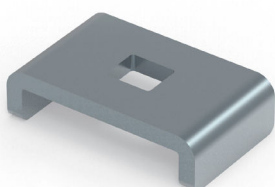
| Type   | Pack Qty | Weight kg/pc |
|--------|----------|--------------|
| SC6CH  | 25       | 0.032        |
| SC8CH  | 25       | 0.032        |
| SD10CH | 25       | 0.032        |

### Support Clamp



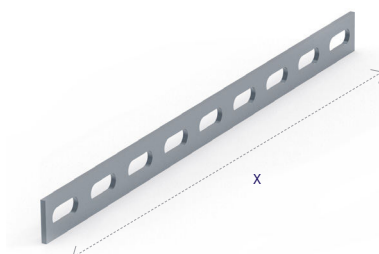
| Type  | Pack Qty | Weight kg/pc |
|-------|----------|--------------|
| FASEZ | 100      | 0.084        |

### Hold Down Clamp for EC60.060 Basket



| Type  | Pack Qty | Weight kg/pc |
|-------|----------|--------------|
| CPUZF | 20       | 0.013        |

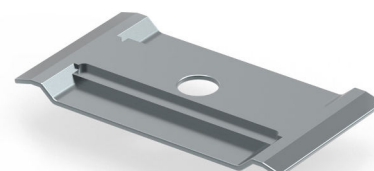
### Slotted Steel Strap



| Type      | Length mm (x) | Pack Qty | Weight /unit |
|-----------|---------------|----------|--------------|
| BKSTP270  | 270           | 10       | 0.108        |
| BKSTP1000 | 1000          | 10       | 0.400        |

20mm wide strap, used to create bends and tees.

### Hold Down Clamp to suit 100mm - 600mm wide basket



| Type   | Pack Qty | Weight kg/pc |
|--------|----------|--------------|
| SC6EZ  | 50       | 0.016        |
| SC8EZ  | 50       | 0.016        |
| SC10EZ | 50       | 0.016        |

## CABLE BASKET SYSTEMS

### Fitting Joint Connector

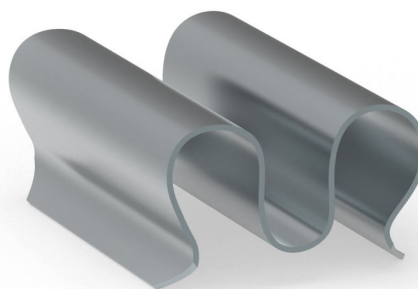
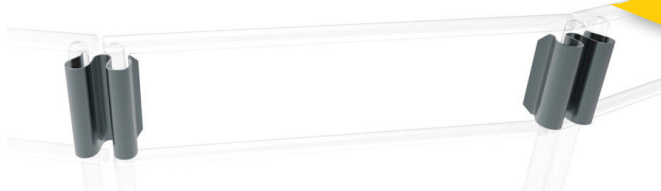
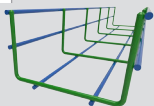
M-CLIC - Create Bends, Tees & Reducers



| Type         | Pack Qty | Weight kg/pc | Wire Ø mm      |
|--------------|----------|--------------|----------------|
| MCLIC-ZF-3.9 | 100      | 0.084        | 3.9mm          |
| MCLIC-ZF-4.3 | 100      | 0.087        | 4.3mm          |
| MCLIC-ZF-4.8 | 100      | 0.091        | 4.6mm to 4.8mm |

| MCLIC-ZF-3.9 |   |   | MCLIC-ZF-4.3 |   |   | MCLIC-ZF-4.8 |   |   |
|--------------|---|---|--------------|---|---|--------------|---|---|
| Basket       | L | C | Basket       | L | C | Basket       | L | C |
| EC30.060     | ✓ | ✓ | EC30.300     | ✓ | ✓ | EC60.400     | X | ✓ |
| EC30.100     | ✓ | ✓ |              |   |   | EC60.500     | ✓ | ✓ |
| EC30.150     | ✓ | ✓ | EC60.300     | ✓ | ✓ | EC60.600     | ✓ | ✓ |
| EC30.200     | ✓ | ✓ | EC60.400     | ✓ | ✓ |              |   |   |
|              |   |   |              |   |   | EC100.300    | X | ✓ |
| EC60.060     | ✓ | ✓ | EC100.150    | ✓ | ✓ | EC100.400    | ✓ | ✓ |
| EC60.100     | ✓ | ✓ | EC100.200    | ✓ | ✓ | EC100.500    | ✓ | ✓ |
| EC60.150     | ✓ | ✓ | EC100.300    | ✓ | X |              |   |   |
| EC60.200     | ✓ | ✓ |              |   |   |              |   |   |

L - Length Wire  
C - Beam Wire



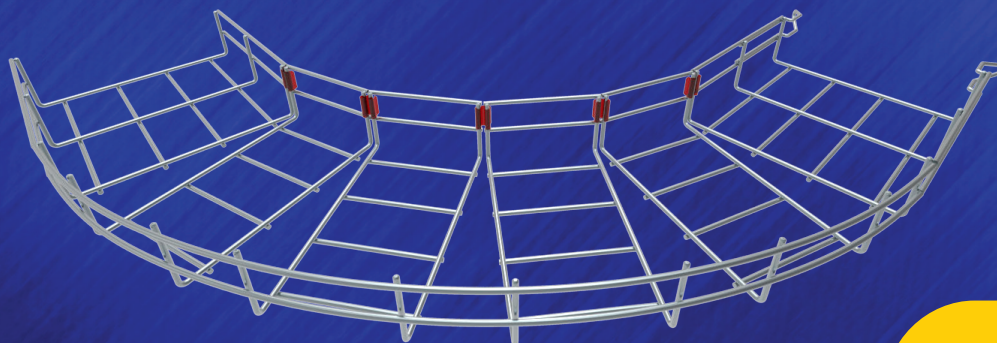
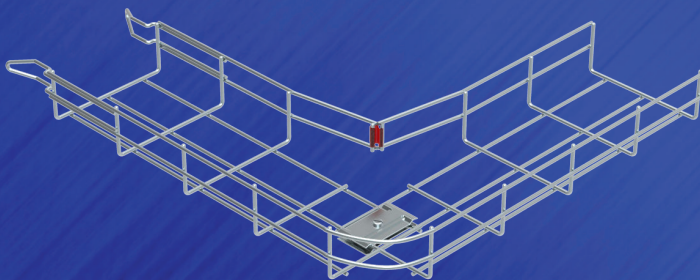
\*Wire information based on electro zinc basket finish

# M-CLIC CONNECTOR

Fast Bends, Tees & Reducers



DESIGNED FOR FAST  
ASSEMBLY OF JOINTS,  
REDUCING TIME AND  
INSTALLATION COSTS.



FAST, SECURE &  
FLEXIBLE



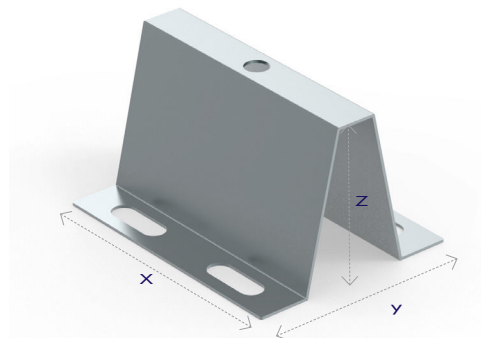
## CABLE BASKET SYSTEMS

### Side Suspension Hanger



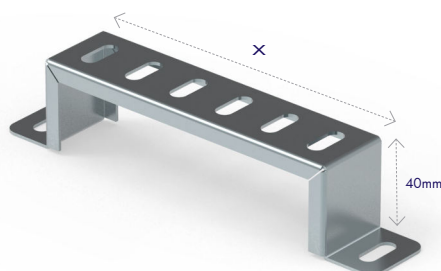
| Type        | Pack Qty | Weight kg/pc |
|-------------|----------|--------------|
| <b>BKSH</b> | 50       | 0.025        |

### Floor Support Bracket



| Type         | Length mm (X) | Width mm (Y) | Height mm (Z) | Pack Qty |
|--------------|---------------|--------------|---------------|----------|
| <b>SASEZ</b> | 100           | 80           | 60            | 20       |

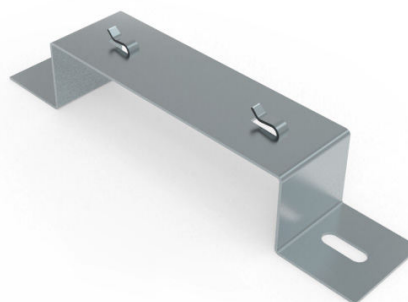
### Stand Off Bracket



| Type          | Length mm (X) | Weight /unit |
|---------------|---------------|--------------|
| <b>SOB100</b> | 100           | 0.063        |
| <b>SOB150</b> | 150           | 0.103        |
| <b>SOB225</b> | 225           | 0.156        |
| <b>SOB300</b> | 300           | 0.210        |
| <b>SOB450</b> | 450           | 0.252        |
| <b>SOB600</b> | 600           | 0.291        |

This is a 40mm high stand for floor mounted mesh basket and cable tray. Which can also be used as a wall stand. Finished in Pre Galvanised Steel to (BS EN ISO 1461). Stainless Steel and Hot Dip Galvanised are also available.

### Clic Stand Off Bracket



| Type           | Length mm (X) | Pack Qty |
|----------------|---------------|----------|
| <b>SD60SZ</b>  | 60            | 48       |
| <b>SD100SZ</b> | 100           | 48       |
| <b>SD150SZ</b> | 150           | 32       |
| <b>SD200SZ</b> | 200           | 32       |
| <b>SD300SZ</b> | 300           | 16       |
| <b>SD400SZ</b> | 400           | 16       |

### Support Spacer

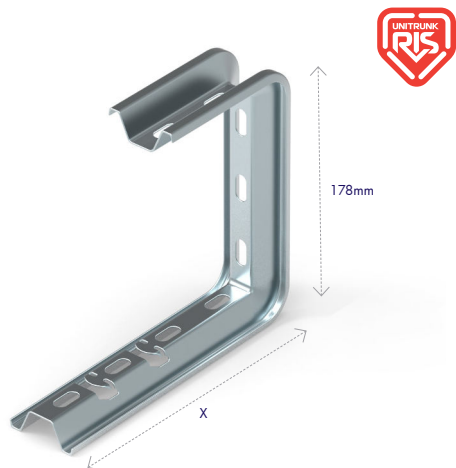
| Type         | Pack Qty | Weight kg/pc |
|--------------|----------|--------------|
| <b>ENTSZ</b> | 20       | 0.027        |

Support Spacer (ENTSZ) should be used with the wall bracket (SOC) & ceiling bracket (SOPC)





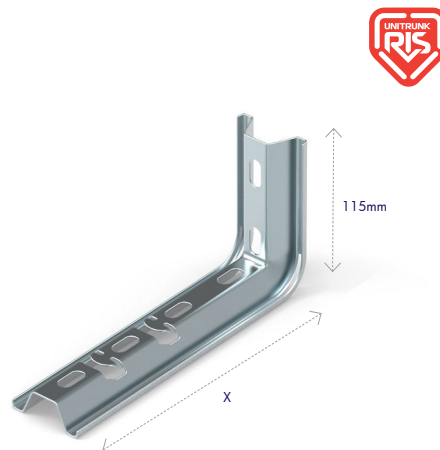
## Ceiling Support Bracket



| Type     | Length mm (X) | Pack Qty | Weight /unit |
|----------|---------------|----------|--------------|
| SOPC10SZ | 100           | 16       | 0.517        |
| SOPC15SZ | 150           | 12       | 0.550        |
| SOPC20SZ | 200           | 8        | 0.623        |
| SOPC30SZ | 300           | 8        | 0.714        |

For fixing to horizontal concrete ceiling and walls. Finished in Pre Galv. Stainless Steel and Hot Dip Galvanised are also available.

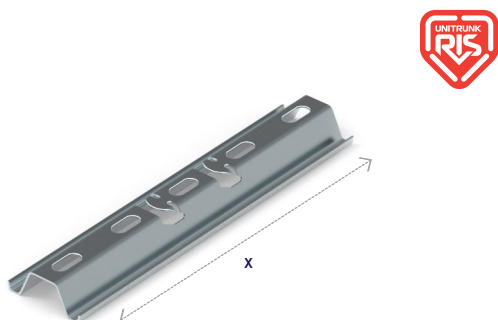
## Wall Support Bracket



| Type    | Length mm (X) | Pack Qty | Weight /unit |
|---------|---------------|----------|--------------|
| SOC10SZ | 100           | 10       | 0.342        |
| SOC15SZ | 150           | 10       | 0.395        |
| SOC20SZ | 200           | 10       | 0.447        |
| SOC30SZ | 300           | 10       | 0.554        |
| SOC40SZ | 400           | 10       | 0.660        |

For fixing to walls, use in tandem with Support spacer. Finished in Pre Galv. Stainless Steel and Hot Dip Galvanised are also available.

## Suspension Support Bracket



| Type    | Length mm (X) | Pack Qty | Weight /unit |
|---------|---------------|----------|--------------|
| SOA10SZ | 100           | 10       | 0.211        |
| SOA15SZ | 150           | 10       | 0.251        |
| SOA20SZ | 200           | 10       | 0.386        |
| SOA30SZ | 300           | 10       | 0.496        |
| SOA40SZ | 400           | 10       | 0.632        |
| SOA50SZ | 500           | 10       | 0.713        |
| SOA60SZ | 600           | 10       | 0.822        |

Suspension bracket with Clic connection. Finished in Pre Galv. Stainless Steel and Hot Dip Galvanised are also available.

## EASY BRACKETS

Mount Ceiling, Wall & Suspension Brackets with just a CLIC



## CABLE BASKET SYSTEMS

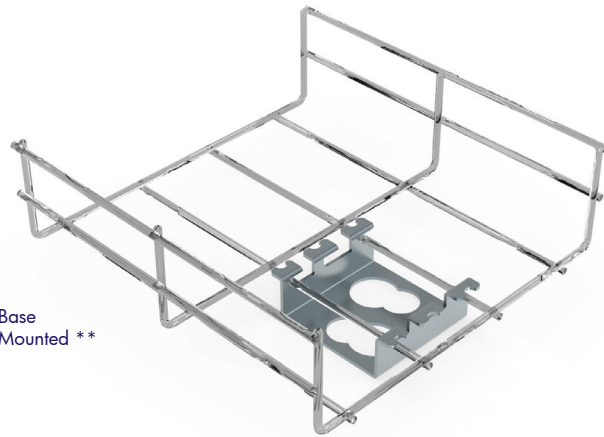
### Conduit Take Off Bracket

For Both Ø20 & Ø25 conduit



Sidewall Mounted \*

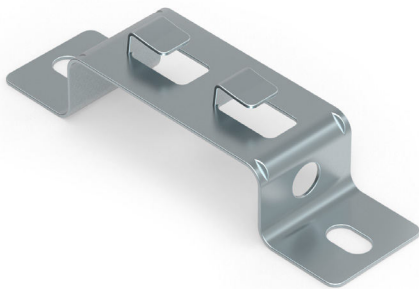
| Type      | Weight<br>kg/pc |
|-----------|-----------------|
| BKCB20-25 | 0.485           |



Base Mounted \*\*

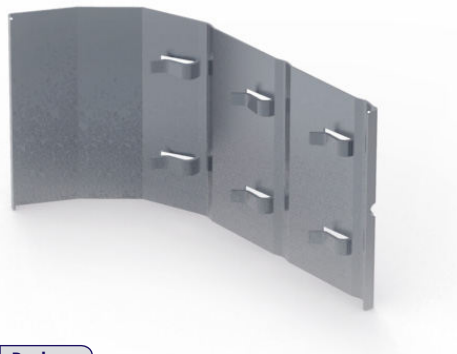
\* Fitted on (sidewall EC.60 & EC.105 ranges)  
\*\* Fitted on (base EC.30, EC.60 & EC.105 ranges)  
Basket shown for illustration purposes only

### Wall Support Clic Bracket



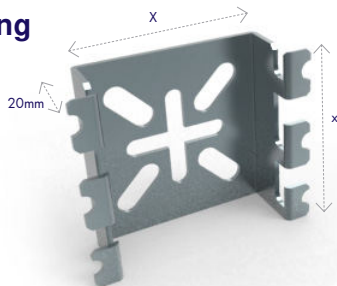
| Type | Weight<br>kg/pc |
|------|-----------------|
| SESZ | 0.046           |

### Drop Out Plate



| Type | Pack<br>Qty |
|------|-------------|
| SC-S | 50          |

### Wall Mounting Bracket



| Type   | Length<br>mm (x) | Weight<br>/unit |
|--------|------------------|-----------------|
| BKMP65 | 65               | 0.840           |
| BKMP90 | 90               | 1.056           |

### Plastic End Cap



| Type  | Pack<br>Qty |
|-------|-------------|
| INVSO | 20          |

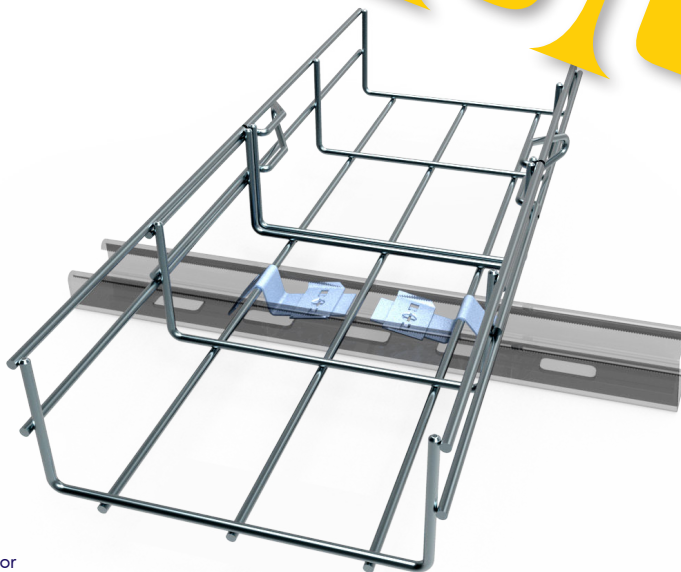
For Supports on Page 99.



## CABLE BASKET SYSTEMS

06

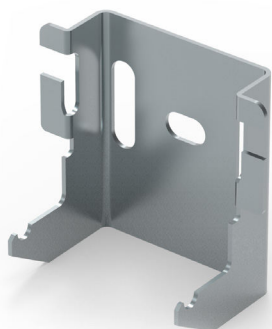
### Basket to Channel clip



| Type          | Pack Qty | Weight kg/pc |
|---------------|----------|--------------|
| <b>UFC41M</b> | 50       | 0.018        |

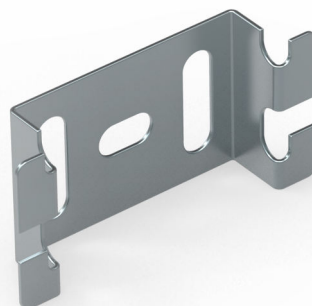
See Page 101, for more information. Basket & Channel shown for illustration purposes only

### Wall or Box Support Bracket 30mm



| Type           | Weight kg/pc |
|----------------|--------------|
| <b>PSA30SZ</b> | 0.725        |

### Wall or Box Support Bracket 60mm

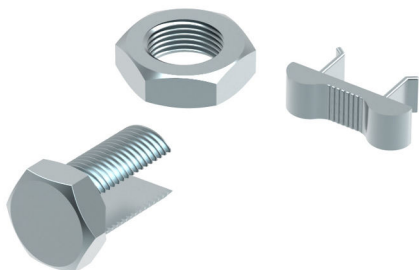


| Type         | Pack Qty | Weight kg/pc |
|--------------|----------|--------------|
| <b>PS60G</b> | 20       | 0.550        |

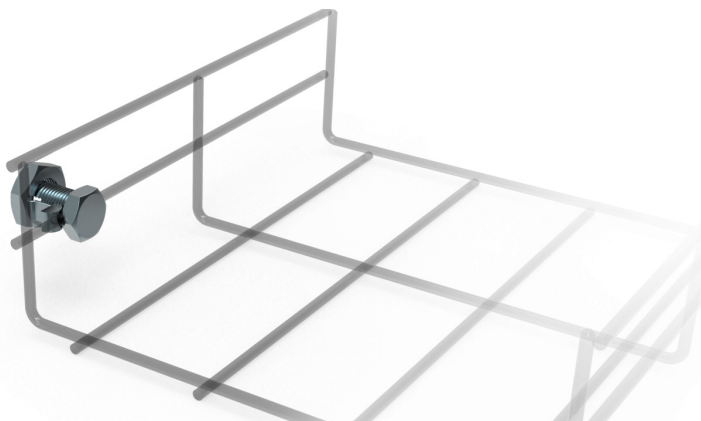
Other finishes are available on request

### Earthing Clamp

Screw fixed Lug to provide earthing point.

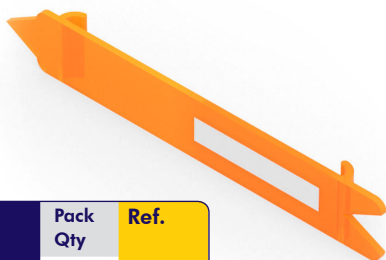


| Type       | Pack Qty |
|------------|----------|
| <b>MAT</b> | 50       |



# CABLE BASKET SYSTEMS

## Plastic ID tags



| Type   | Pack Qty | Ref.  |
|--------|----------|-------|
| Orange | 1        | BKIDO |
| Yellow | 1        | BKIDY |
| Blue   | 1        | BKIDG |
| Green  | 1        | BKIDG |

To allow contractor to colour code and index cable installations.

## Bolt Cutter



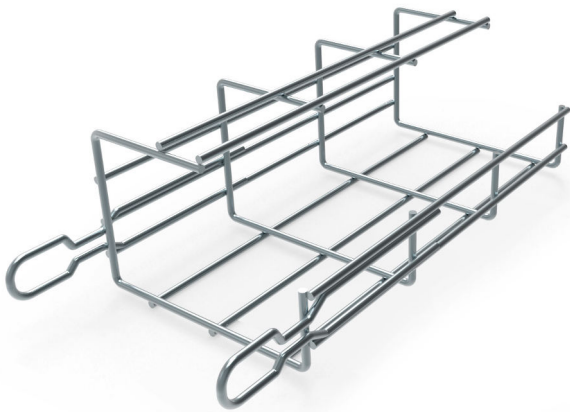
| Type        | Max Wire Ø mm | Weight kg/pc |
|-------------|---------------|--------------|
| BFR/CUTTERS | 7             | 1.594        |

Bolt cutter complete with 30° offset jaw and flush cut.

## G Profile Basket

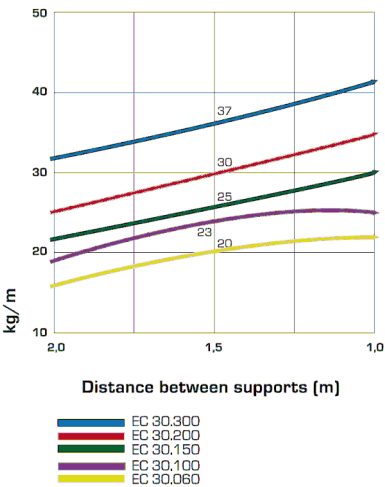
Ref. On Request

Ideal for mounting to a ceiling or even direct to a wall. While maintaining the fast fix easy connect.

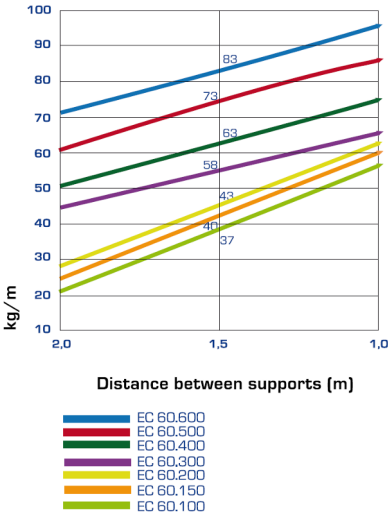


## Basket Loading Information

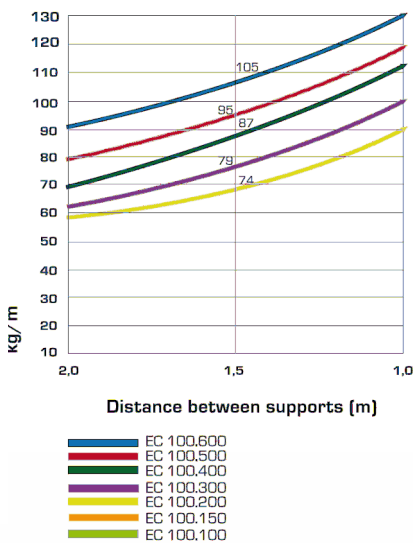
SAFE WORKLOAD - EASYCONNECT 30



SAFE WORKLOAD - EASYCONNECT 60



SAFE WORKLOAD - EASYCONNECT 100



# BASKET TO CHANNEL RAPID INSTALLATION

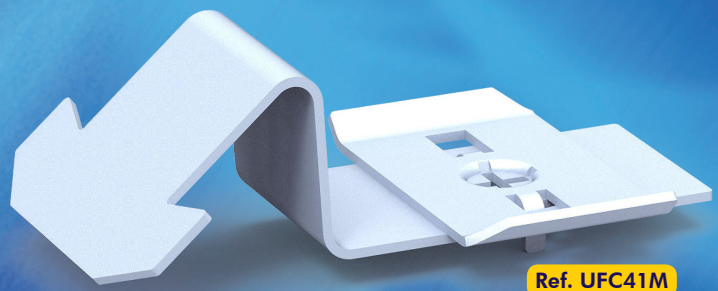


**Designed for Cable Baskets Systems**



**FAST  
& SIMPLE**

**SECURE &  
EASY TO INSTALL**



Ref. UFC41M

The UFC41M clip will secure the basket onto UC4121, UC4141 channel & channel Cantilever Arms. This clip works best with Unitrunks' Intelok Channel, as the serration on the return flange provides maximum slip resistance under a side load/impact.

The clip is simple to fit; slot it in over the bar on the basket and using a star head screwdriver simply turn the clip through 90° to secure.